

PRODUCTION TOOLING SOLUTION

UK Sales: sales@solderconnection.co.uk | Tel: +44(0)1291 624 400 | Irish Sales: sales@solderconnection.ie



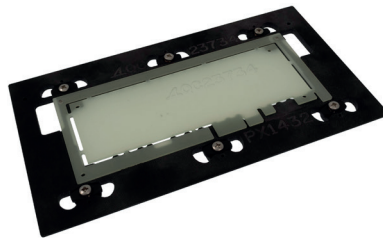
Solder Connection offers a complete bespoke design and manufacturing solution for all your tooling requirements.

High performance composite materials specifically designed for the PCB assembly process. Designed & manufactured to the highest quality.



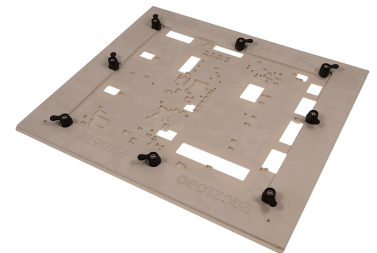
Wave Solder Pallet

Wave Carriers support and protect PCB's during the wave solder process. Allows for increased through-put and the securing & soldering of critical components. Wave Pallets also help prevent board warpage across the solder wave.



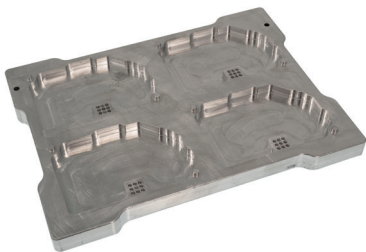
Print Placement Reflow Carrier

Allows thin or oddly shaped printed circuit boards to be supported during the print stage. Recessed wing fixings are then lifted onto the PCB to retain it during placement and reflow. These carriers reduces handling, decreases set-up time & improves soldering quality.



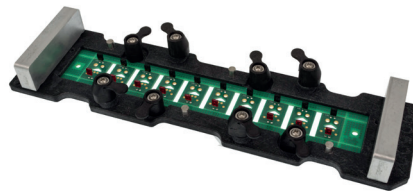
Conformal Coating Carriers

Conformal Coating process tooling and fixtures will offer additional production efficiency and will increase the reliability of your coating process overall, thereby removing the inaccuracies of manual masking techniques and reduce your overall costs.



Press Pin Fixture

Press Pin Fixtures are used to support a PCB and protect bottom-side components, whilst compliant pins are pressed into the board. These effective tooling designs remove the risk of excessive pressure causing damage to the component.



Unique & Bespoke Designs

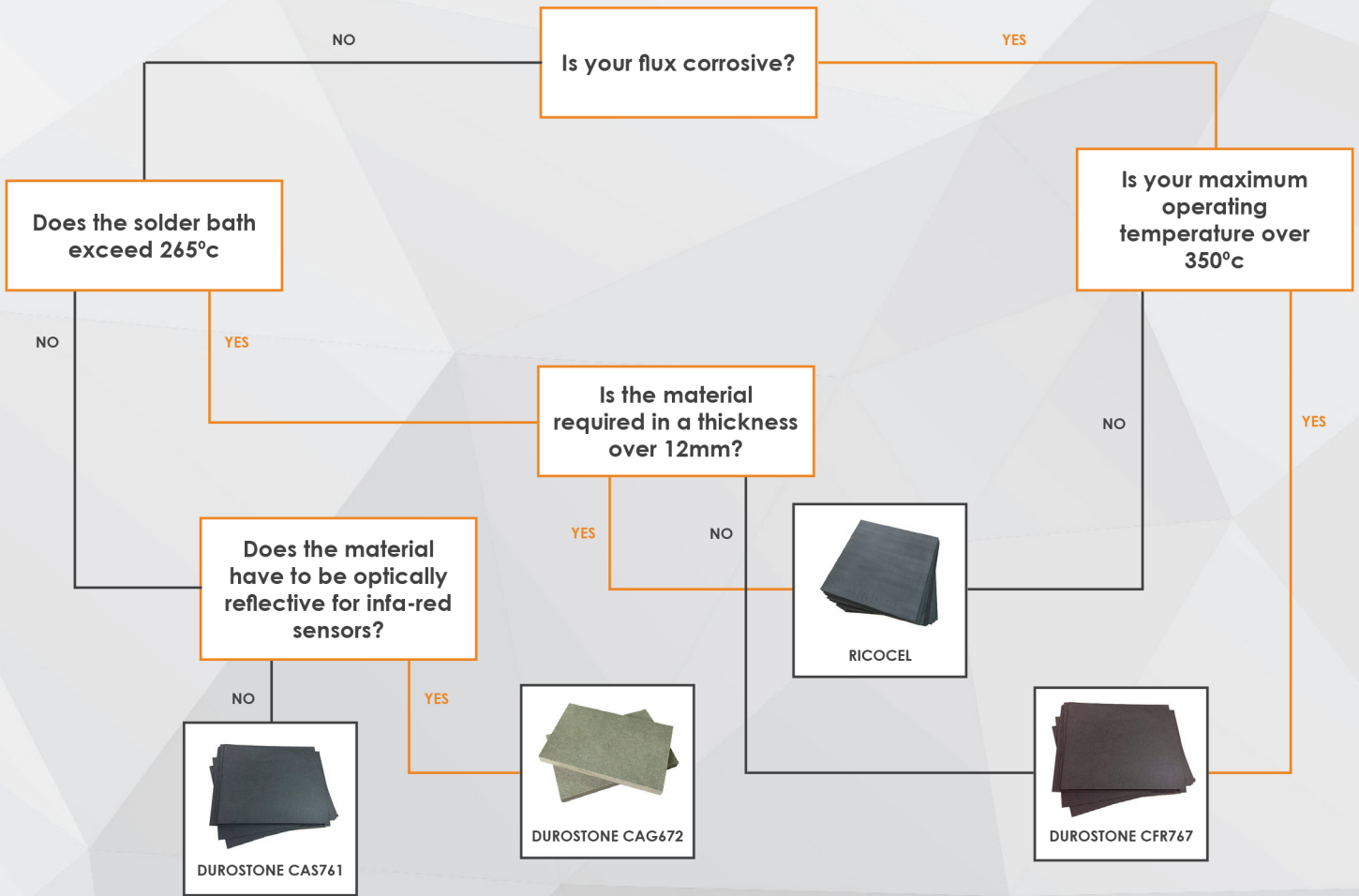
Using your Gerber/CAD data, our creative tooling designs give you the ability to undertake complex assembly procedures, reliably and consistently. These engineered solutions can be manufactured in aluminum, composite or a mixture of both.



Solder Recovery Moulds

Manufactured in 3mm Mild Steel and professionally welded, our Solder Recovery Moulds allow for easy draining and removal of solder from your solder pots. The moulds are lightweight, ergonomic and can be manufactured bespoke to your requirements.

Which material should I choose for my tooling?



Technical Data	RICOCEL ES3261A	DUROSTONE CFR767	DUROSTONE CAS761	DUROSTONE CAG762
Grade	Aggressive Flux Resistant	High Temperature Flux Resistant	Anti-Static	Anti-Static Optical
Density (g/cm ³)	1.95	1.8	1.85	1.85
Water Absorption (%)	0.02	<0.20	<0.20	<0.20
Thermal Conductivity (W/m ² K)	0.38	0.23	0.25	0.25
Coefficient of Linear Expansion (10 ⁻⁶ /K) between 30°C & 200°C	10	11	11	11
Max Operating Temperature (°C) 10-20 seconds	350	380	300	300
Standard Operating Temperature (°C)	300	300	260	260
Surface Resistivity (ohms)	1 x 10 ⁷	10 ⁵ -10 ⁹	10 ⁵ -10 ⁹	10 ⁵ -10 ⁹
Thickness' Available (mm)	3, 4, 5, 6, 8, 10, 12, 14	3, 4, 5, 6, 8, 10, 12		

UK Office:

Tel: +44(0)1291 624 400
sales@solderconnection.co.uk

Unit 5 Severn Link Distribution Centre
Chepstow • Monmouthshire
NP16 6UN

Ireland Office:

Tel: +353(1)842 1172
sales@solderconnection.ie

Unit D20 North City Business Park
Finglas, Dublin 11



www.solderconnection.com